

21



参考答案

Weilai study
未来思维

儿童拓展系列C级(下)



数量



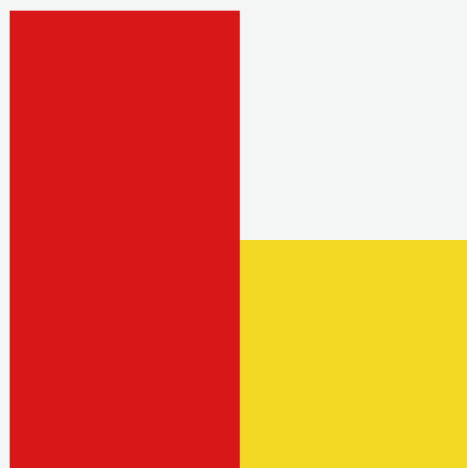
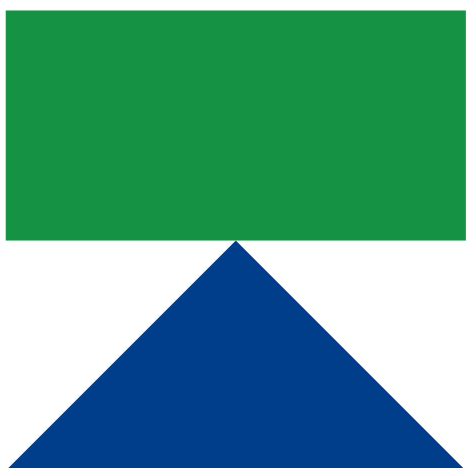
图形



思考

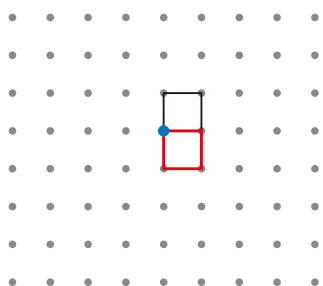


逻辑

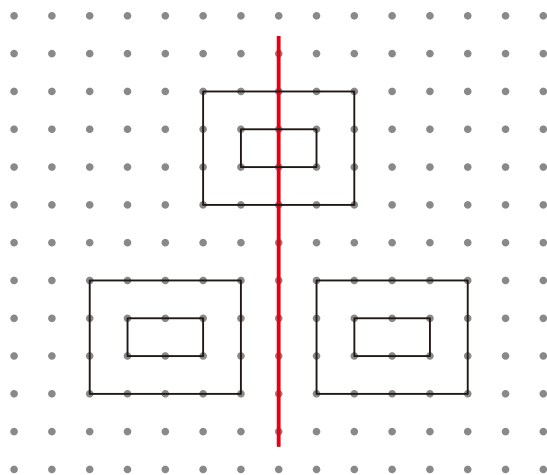


答案

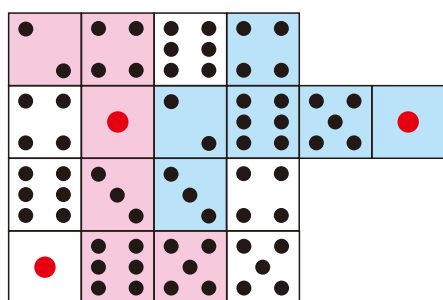
21-1 ● 画出旋转图形①...P1



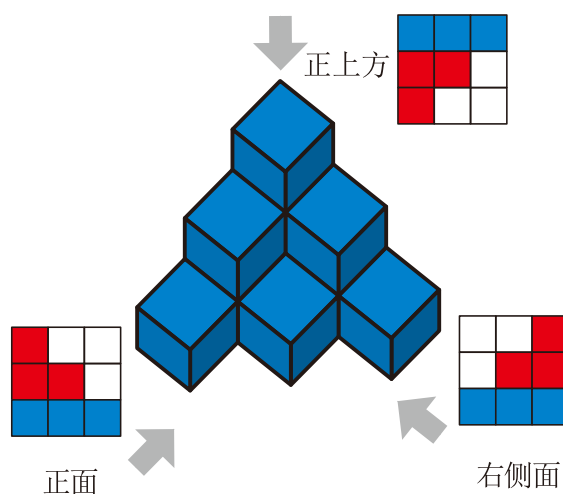
21-1 ● 找出对称轴①...P2



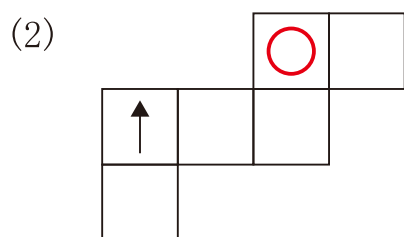
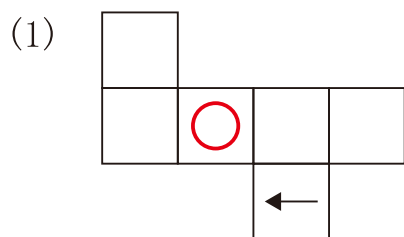
21-1 ● 骰子展开图①...P3



21-1 ● 三视图①...P4



21-1 ● 拼接展开图①...P5



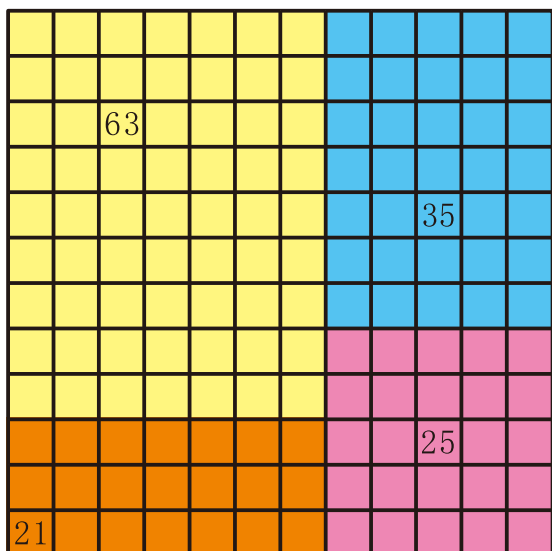
21-1 ● 完成+-×计算①...P6

$$(1) \quad 73 - 9 \times 8 + 11 \times 10 = 111$$

$$(2) \quad 13 \times 7 - 9 \times 9 + 1 = 11$$

答案

21-1 ●乘法方格 融合①…P7



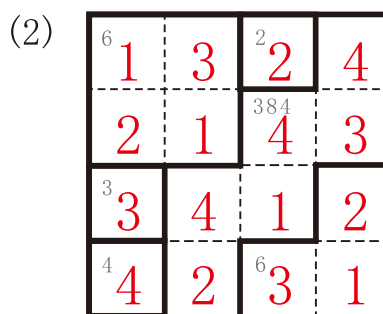
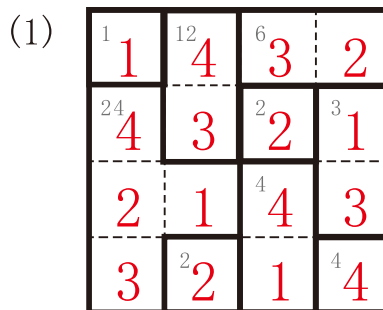
21-1 ●8的数独①…P9

6	7	1	4	2	8	5	3
8	2	5	3	4	6	7	1
7	4	2	1	8	3	6	5
5	3	6	8	1	4	2	7
4	1	3	6	5	7	8	2
2	5	8	7	6	1	3	4
3	6	4	5	7	2	1	8
1	8	7	2	3	5	4	6

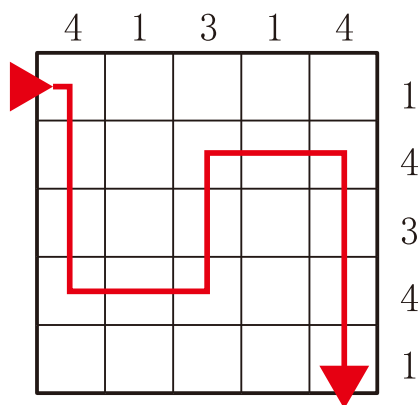
21-1 ●6的数独①···P11

5	3	4	1	6	2
2	6	1	4	3	5
3	1	5	6	2	4
6	4	2	3	5	1
4	2	3	5	1	6
1	5	6	2	4	3

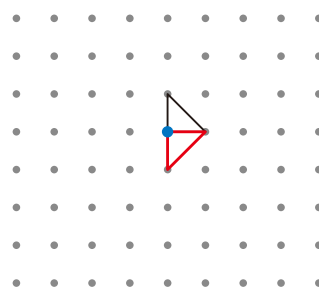
21-1 ●乘法迷宫①…P8



21-1 ●开辟道路C①…P10

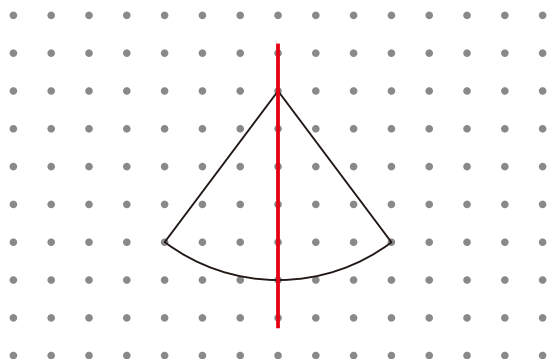


21-2 ●画出旋转图形②…P12

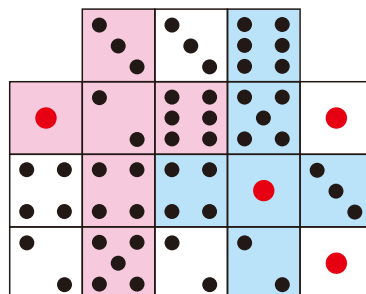


答案

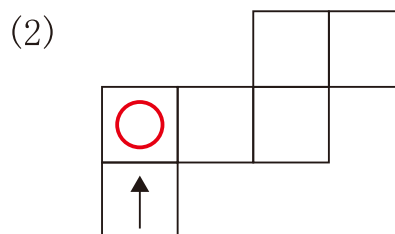
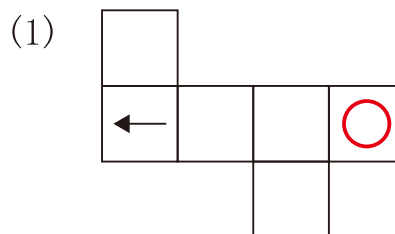
21-2 ●找出对称轴②…P13



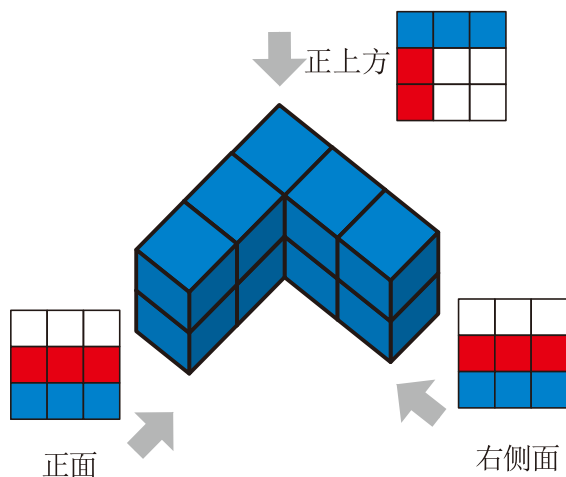
21-2 ●骰子展开图②…P14



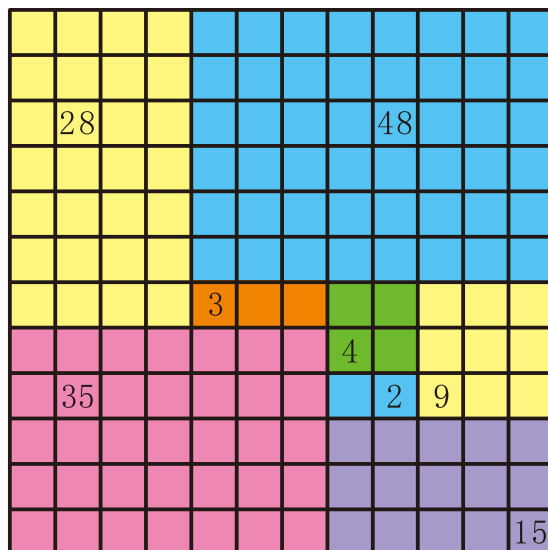
21-2 ●拼接展开图②…P16



21-2 ●三视图②…P15



21-2 ●乘法方格 融合②…P18



21-2 ●完成+-×计算②…P17

(1) $25 \times 7 + 50 \times 7 - 75 \times 7 = 0$

(2) $12 \times 9 - 6 \times 8 - 4 \times 15 = 0$

答案

21-2 ●乘法迷宫②…P19

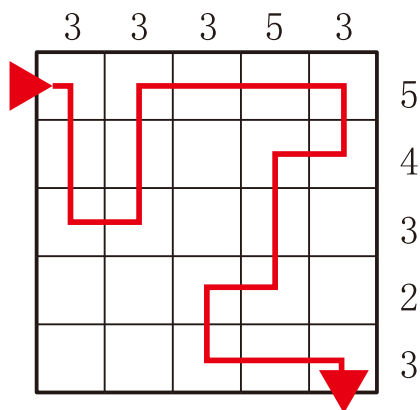
(1)

³ 3	⁴ 1	⁶ 2	⁸ 4
1	4	3	2
⁶ 2	3	⁴ 4	1
⁸ 4	2	1	³ 3

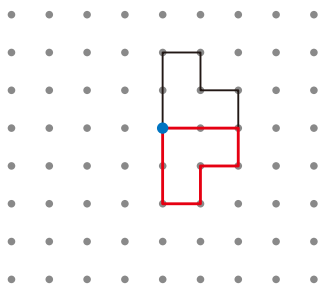
(2)

² 2	3	¹ 1	4
1	⁴¹⁴⁷² 2	4	3
4	1	3	2
3	⁴ 4	2	1

21-2 ●开辟道路C②…P21



21-3 ●画出旋转图形③…P23



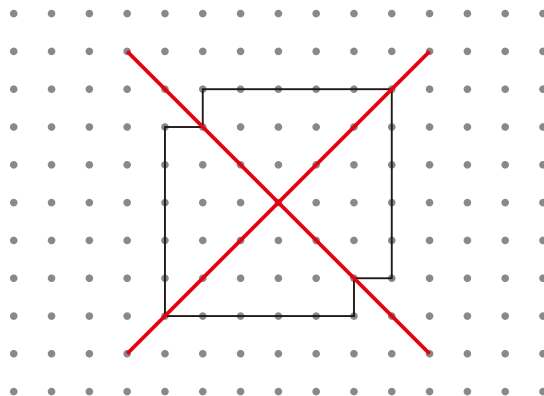
21-2 ●8的数独②…P20

7	5	4	2	1	3	8	6
3	6	8	1	5	4	7	2
8	4	3	7	6	2	1	5
1	2	6	5	3	7	4	8
4	1	7	6	2	8	5	3
2	3	5	8	4	1	6	7
6	7	2	4	8	5	3	1
5	8	1	3	7	6	2	4

21-2 ●6的数独②…P22

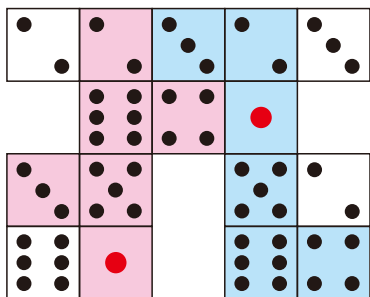
6	3	5	2	1	4
4	1	2	6	3	5
5	6	3	1	4	2
1	2	4	3	5	6
2	5	1	4	6	3
3	4	6	5	2	1

21-3 ●找出对称轴③…P24

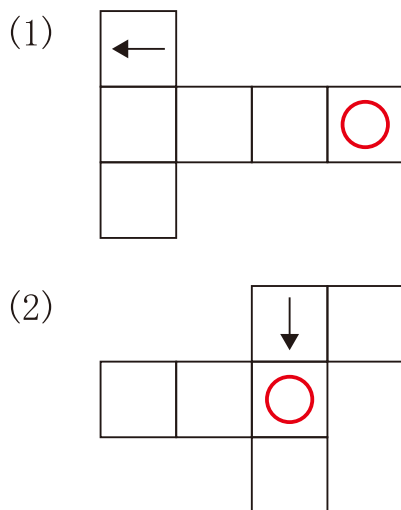


答案

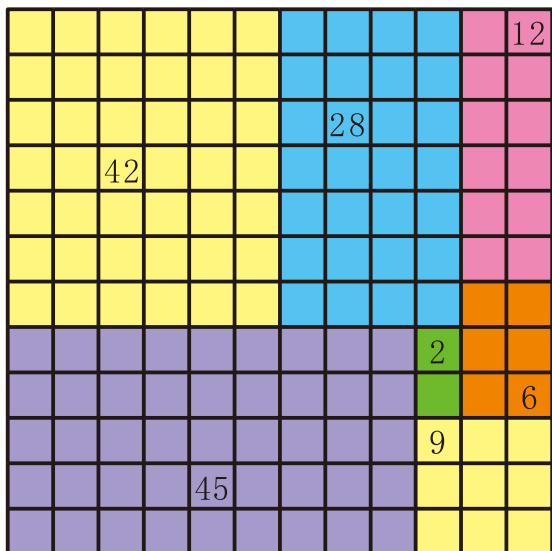
21-3 ●骰子展开图③…P25



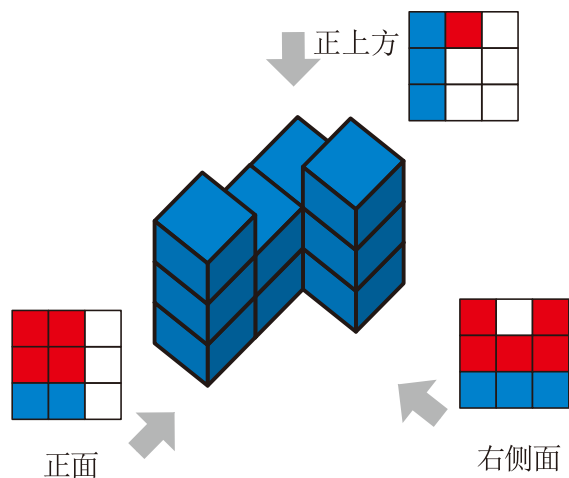
21-3 ● 拼接展开图③...P27



21-3 ●乘法方格 融合③…P29



21-3 ●三视图③…P26



21-3 ●完成十一×计算③…P28

(1) $12 \times 34 - 56 \times 7 - 8 = 8$

$$(2) \quad 5 \times 10 + 15 \times 20 + 25 \times 30 = 1100$$

21-3 ●乘法迷宫③…P30

(1)

²⁴ 1	¹² 4	3	² 2
4	3	² 2	⁴⁸ 1
2	¹ 1	4	3
³ 3	² 2	1	4

(2)

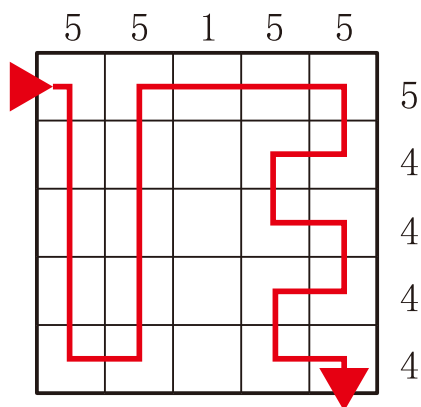
²⁴ 2	¹² 3	4	1
3	⁴ 4	² 1	²⁴ 2
4	1	2	3
⁶ 1	2	3	4

答案

21-3 ●8的数独③...P31

1	3	2	7	8	5	4	6
5	6	4	8	2	3	1	7
3	5	7	6	4	2	8	1
4	2	8	1	3	6	7	5
8	4	6	5	1	7	3	2
7	1	3	2	6	8	5	4
6	7	1	3	5	4	2	8
2	8	5	4	7	1	6	3

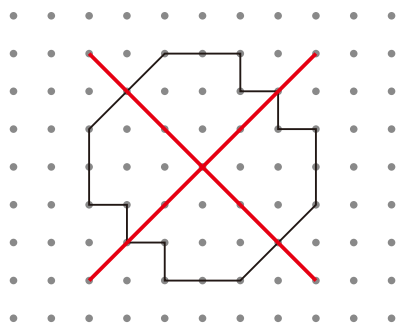
21-3 ●开辟道路C③...P32



21-3 ●6的数独③...P33

6	3	2	5	4	1
1	4	5	3	6	2
5	6	4	1	2	3
2	1	3	6	5	4
3	2	6	4	1	5
4	5	1	2	3	6

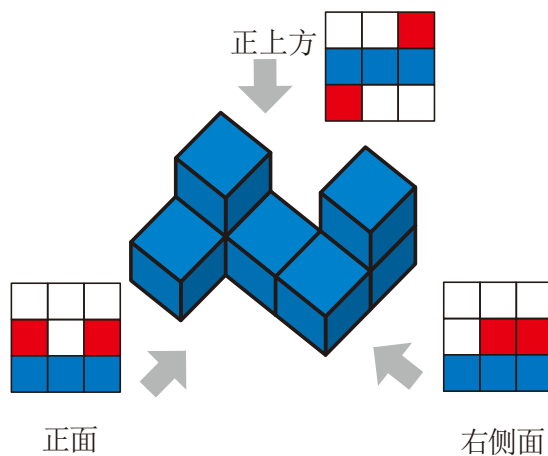
①



③

¹² 2	3	¹ 1	4
1	2	⁵⁷⁶ 4	3
⁴ 4	1	3	2
³ 3	4	⁴ 2	1

②



④

